

# 宗 地 图

XDG-2020-71号A地块

单位: m · m<sup>2</sup>

3483.75-40533.75,  
3484.00-40533.75

320292004105GB00076

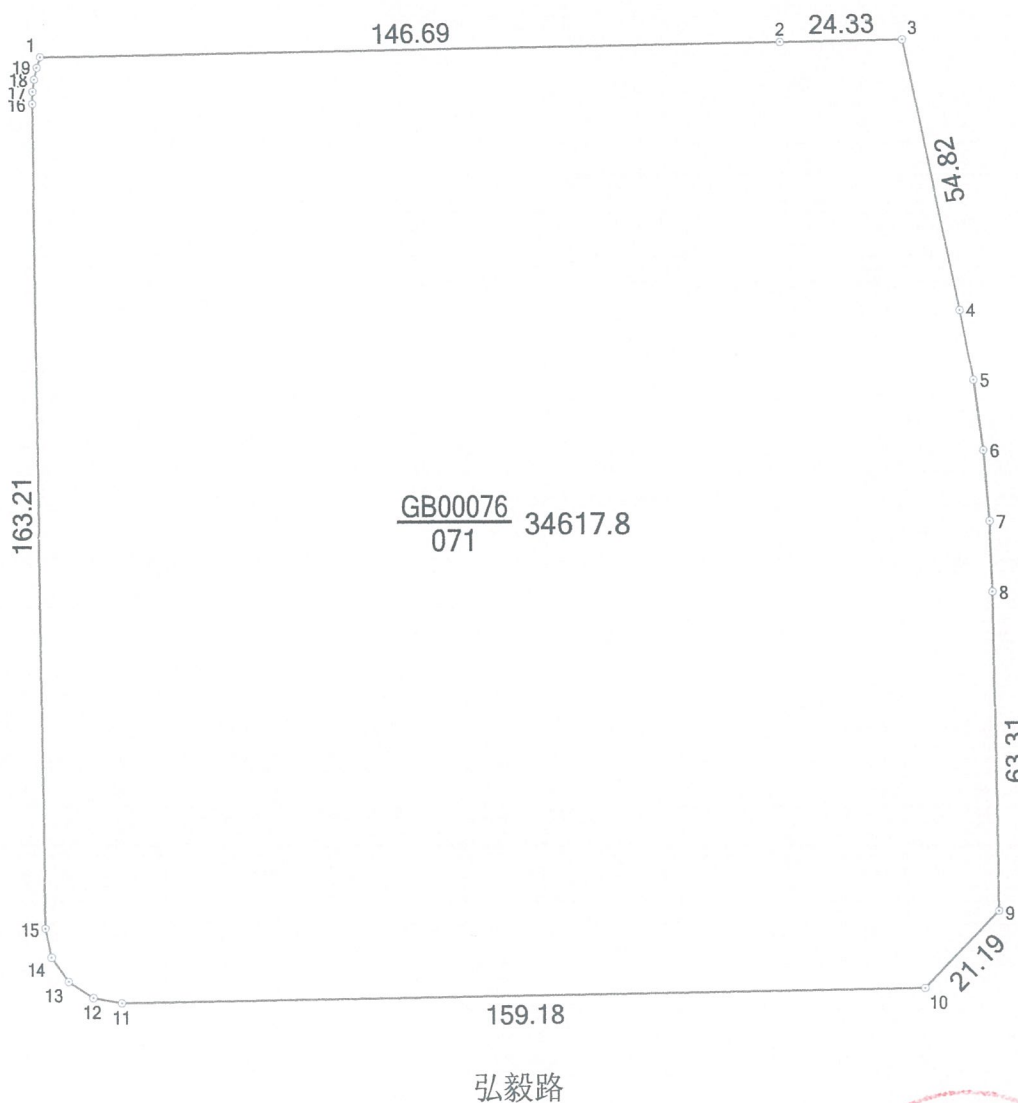


清源路

惠景路

规划道路

$\frac{GB00076}{071}$  34617.8



- |             |             |
|-------------|-------------|
| 4-5: 14.06  | 5-6: 14.06  |
| 6-7: 14.06  | 7-8: 14.06  |
| 11-12: 5.72 | 12-13: 5.86 |
| 13-14: 5.86 | 14-15: 5.86 |
| 16-17: 2.42 | 17-18: 2.42 |
| 18-19: 2.42 | 19-1: 2.20  |



1:1500

绘图员: 吴景宇

审核员: 常鹏

2020年10月28日

### 界址点成果表

宗地号 320292004105GB00076

宗地面积 (平方米) 34617.8

#### 界址点坐标

顺序号	点号	坐标		边长 (m)	备注
		X (m)	Y (m)		
1	1	3484138.419	40533799.168	146.69	
2	2	3484141.200	40533945.836	24.33	
3	3	3484141.639	40533970.161	54.82	
4	4	3484088.006	40533981.494	14.06	
5	5	3484074.183	40533984.068	14.06	
6	6	3484060.251	40533985.975	14.06	
7	7	3484046.245	40533987.208	14.06	
8	8	3484032.195	40533987.766	63.31	
9	9	3483968.889	40533988.753	21.19	
10	10	3483953.670	40533974.001	159.18	
11	11	3483951.187	40533814.837	5.72	
12	12	3483952.217	40533809.206	5.86	
13	13	3483955.400	40533804.286	5.86	
14	14	3483960.225	40533800.960	5.86	
15	15	3483965.956	40533799.738	163.21	
16	16	3484129.155	40533797.513	2.42	
17	17	3484131.576	40533797.597	2.42	
18	18	3484133.977	40533797.916	2.42	
19	19	3484136.337	40533798.465	2.20	
20	1	3484138.419	40533799.168		

# 宗 地 图

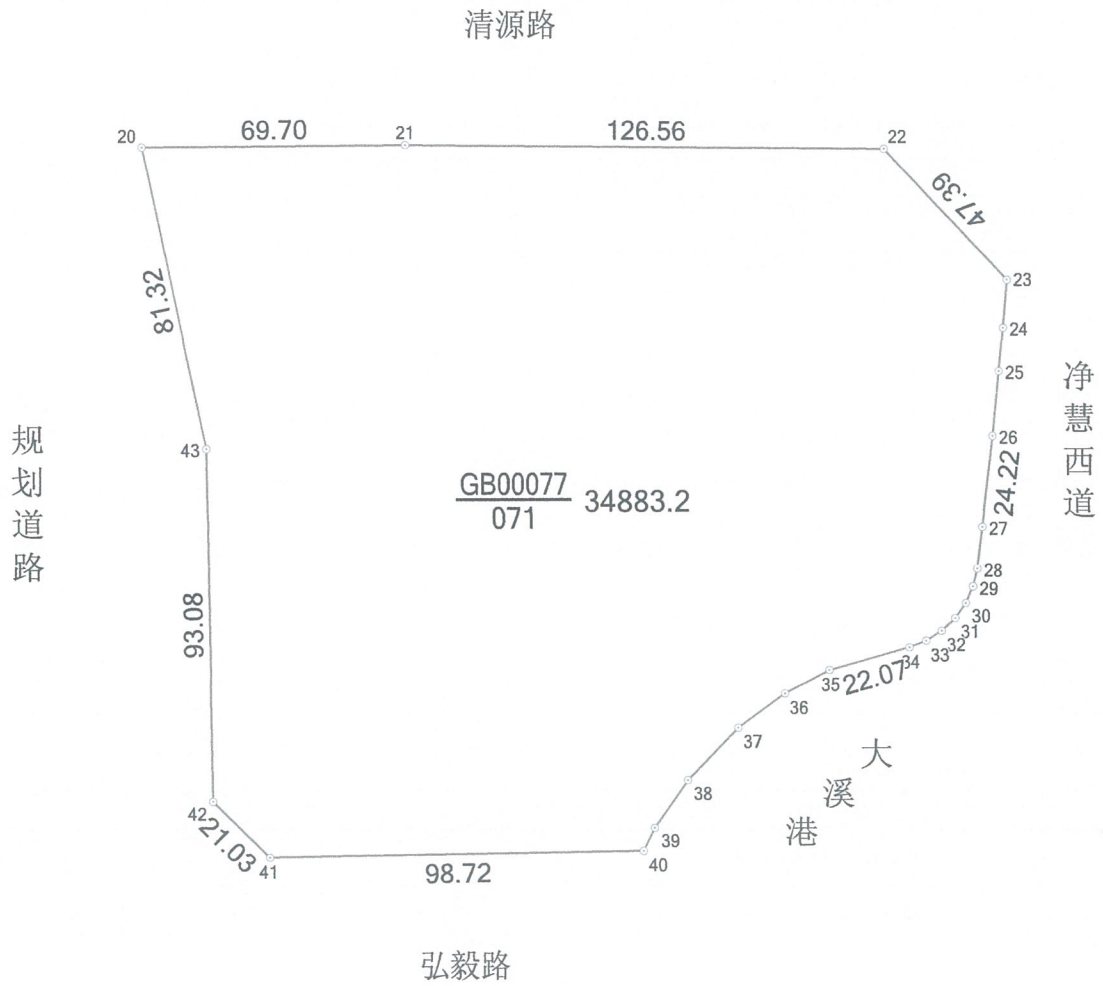
XDG-2020-71号B地块

单位: m · m<sup>2</sup>

3483. 75-40534. 00,  
3484. 00-40533. 75,  
3484. 00-40534. 00

320292004105GB00077

北



23-24: 12.71	24-25: 11.51
25-26: 17.21	27-28: 11.03
28-29: 4.85	29-30: 4.85
30-31: 4.85	31-32: 4.85
32-33: 4.85	33-34: 4.80
35-36: 13.25	36-37: 15.32
37-38: 19.26	38-39: 15.30
39-40: 6.78	



## 界址点成果表

宗地号 320292004105GB00077

宗地面积 (平方米) 34883.2

### 界址点坐标

顺序号	点号	坐标		边长 (m)	备注
		X (m)	Y (m)		
1	20	3484141.772	40533986.503	69.70	
2	21	3484142.328	40534056.200	126.56	
3	22	3484141.124	40534182.754	47.39	
4	23	3484106.495	40534215.104	12.71	
5	24	3484093.827	40534214.037	11.51	
6	25	3484082.369	40534212.975	17.21	
7	26	3484065.252	40534211.222	24.22	
8	27	3484041.202	40534208.393	11.03	
9	28	3484030.262	40534207.010	4.85	
10	29	3484025.537	40534205.907	4.85	
11	30	3484021.115	40534203.911	4.85	
12	31	3484017.161	40534201.099	4.85	
13	32	3484013.824	40534197.576	4.85	
14	33	3484011.231	40534193.475	4.80	
15	34	3484009.497	40534188.996	22.07	
16	35	3484003.562	40534167.735	13.25	
17	36	3483997.406	40534155.996	15.32	
18	37	3483988.385	40534143.609	19.26	
19	38	3483974.568	40534130.196	15.30	
20	39	3483961.999	40534121.476	6.78	
21	40	3483955.925	40534118.457	98.72	

## 界址点成果表

宗地号 320292004105GB00077

宗地面积 (平方米) 34883.2

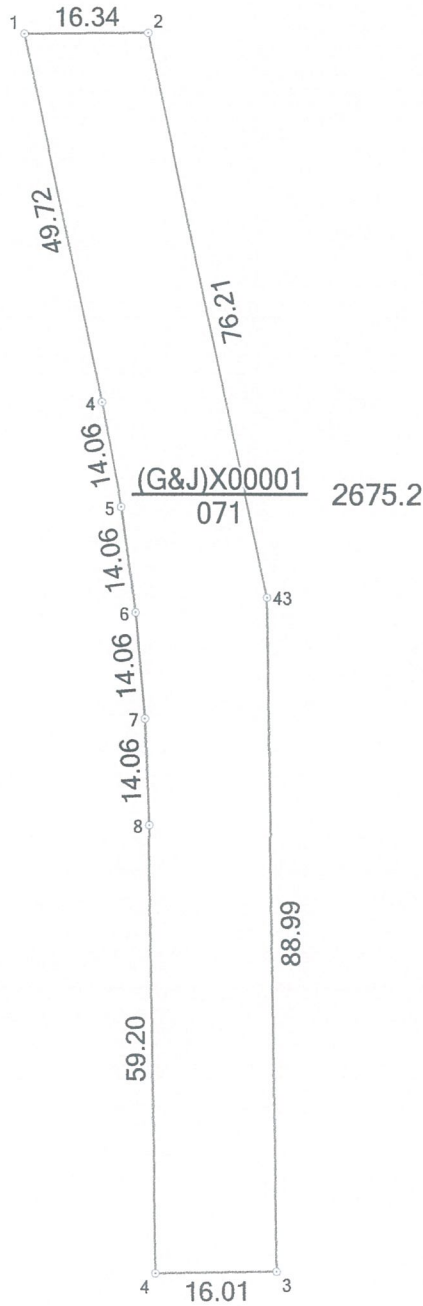
### 界址点坐标

顺序号	点号	坐标		边长 (m)	备注
		X (m)	Y (m)		
21	40	3483955.925	40534118.457	98.72	
22	41	3483954.385	40534019.750	21.03	
23	42	3483969.140	40534004.763	93.08	
24	43	3484062.212	40534003.312	81.32	
25	20	3484141.772	40533986.503		

# 宗 地 图

3483. 75-40533. 75,  
3483. 75-40534. 00,  
3484. 00-40533. 75

320292004105 (G&J) X00001



注: -5.500米至+0.500米 (1985国家高程基准)

### 界址点成果表

宗地号 320292004105(G&J)X00001

宗地面积 (平方米) 2675.2

#### 界址点坐标

顺序号	点号	坐标		边长 (m)	备注
		X (m)	Y (m)		
1	1	3484136.648	40533971.216	16.34	
2	2	3484136.778	40533987.558	76.21	
3	43	3484062.212	40534003.312	88.99	
4	3	3483973.233	40534004.699	16.01	
5	4	3483973.004	40533988.689	59.20	
6	8	3484032.195	40533987.766	14.06	
7	7	3484046.245	40533987.208	14.06	
8	6	3484060.251	40533985.975	14.06	
9	5	3484074.183	40533984.068	14.06	
10	4	3484088.006	40533981.494	49.72	
11	1	3484136.648	40533971.216		